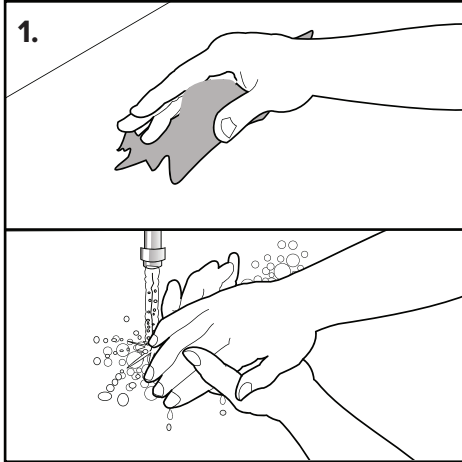


# Inject-Ease

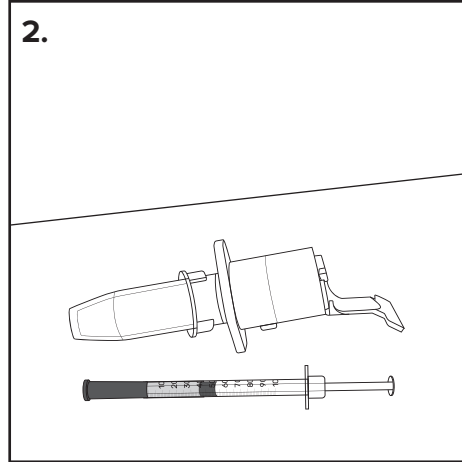
**Purpose:** Sticking a needle into your own body can be challenging. Some patients experience benefits from using assistive devices such as the Inject-Ease, which allows you to simply press a button to initiate placement of the needle into your penis.

**Available here:** [diabetesexpress.ca/collections/injection-aids/products/inject-ease-automatic-injector](http://diabetesexpress.ca/collections/injection-aids/products/inject-ease-automatic-injector)

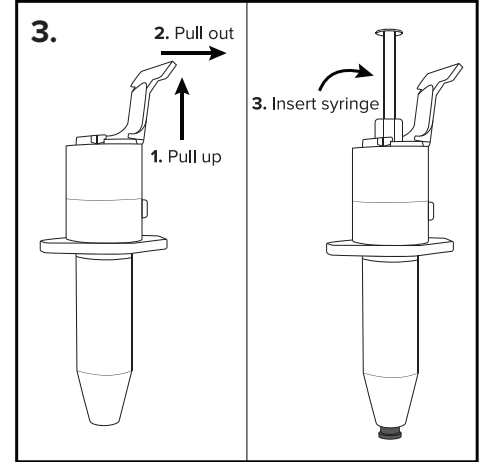
**How to use:** [youtube.com/watch?v=afTOv3ZI7KA](https://www.youtube.com/watch?v=afTOv3ZI7KA)



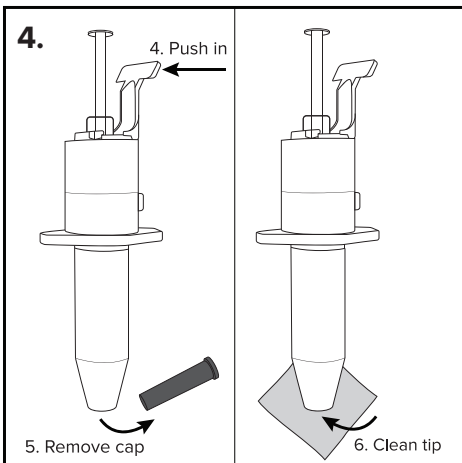
1. Prepare a clean work area. Wash your hands.



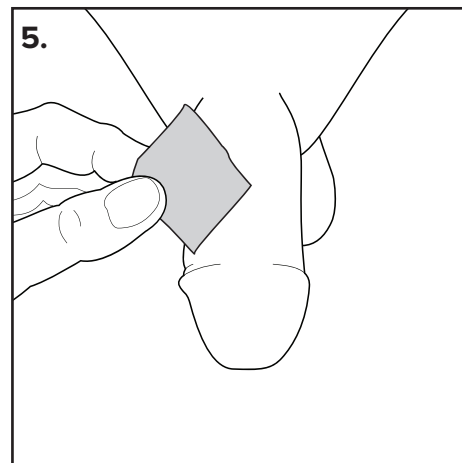
2. Prepare and fill your syringe with your medication as you were taught.



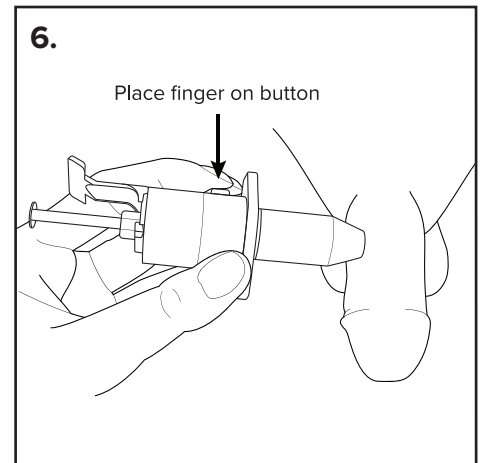
3. Pick up Inject-Ease and take off "clear" end. Pull up tab and push out tab slightly to allow insertion of prepared syringe (do not push on plunger when inserting - this will dispense medication early!)



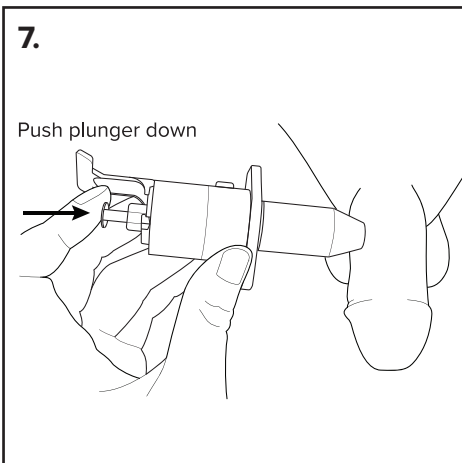
4. Push white tab back in. Remove orange cap of syringe. Clean the tip of Inject-Ease with alcohol swab and place Inject-Ease on the counter/table. You may position tip over alcohol swab you used to ensure it stays clean.



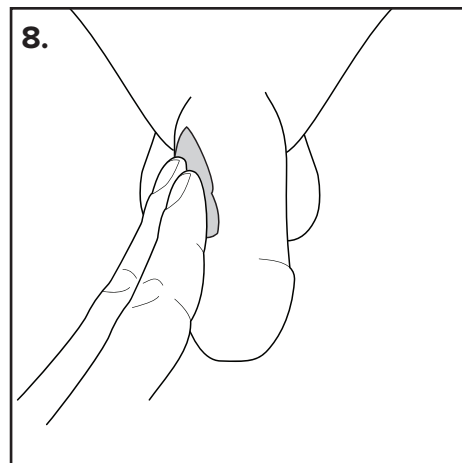
5. Grip your penis and wipe skin with alcohol swab. Let alcohol dry.



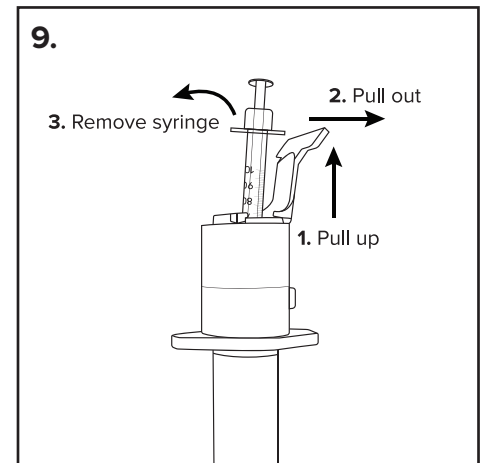
6. Pick up Inject-Ease and gently push tip into penis. Place finger on button.



7. Push button down. Push plunger of syringe down to dispense medication into penis.



8. Pull out needle. Place Inject-Ease on the counter/table, and hold pressure at injection site for at least 2 FULL minutes until bleeding has stopped.



9. To dispose of needle: Pull Inject-Ease tab up and out to remove syringe, dispensing the syringe into your sharps container. Wipe Inject-Ease tip with alcohol swab and store until your next use.

---

**Prostate Cancer Supportive Care (PCSC) Program**  
Level 6, Station 3 2775 Laurel Street, Vancouver, BC V5Z 1M9  
Phone: 604-875-4485 Fax: 604-914-3003

---



For more copies, go online at [vch.eduhealth.ca](http://vch.eduhealth.ca) or email [pchem@vch.ca](mailto:pchem@vch.ca) and quote Catalogue No. **GD.351.I55**  
© Vancouver Coastal Health, March 2023

The information in this document is intended solely for the person to whom it was given by the health care team.  
[vch.ca](http://vch.ca)